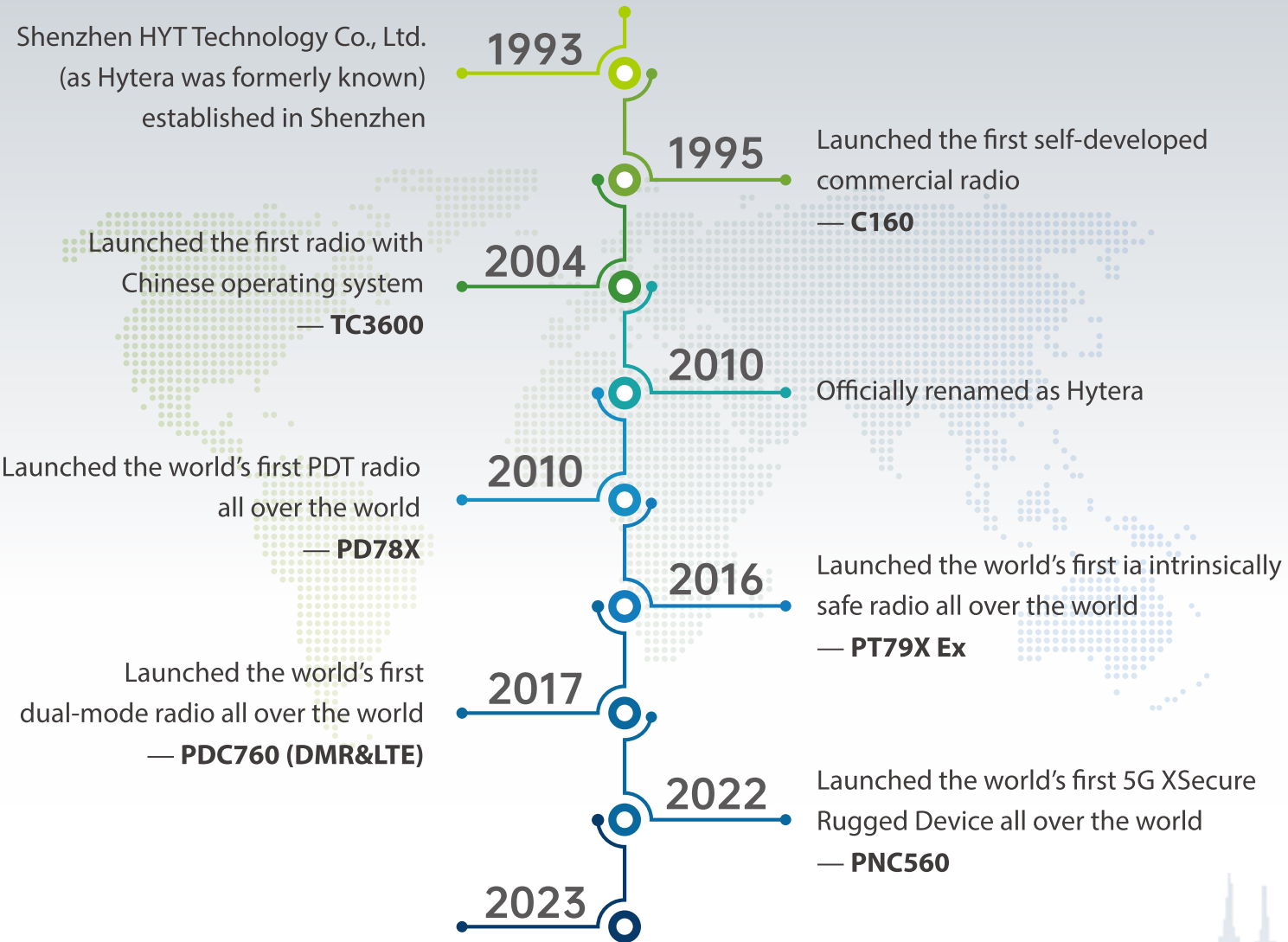


30 years of radio communications, beyond.



Hytera serves 20 million users for public safety, firefighting, railway, airports, factories, hotels, supermarkets, and more industries home and abroad.

**S Business Two-way Radio**  
S1/S1 LF Efficiency in Duo





## Overview

Hytera S1/S1 LF redefines the business-ready analog radio. It blends classic radio elements with exquisite craftsmanship and forward fashion. From form factor to user experience, the S1/S1 LF breaks with tradition to shape the trend of next-generation business radio—modern, simple, and timeless.

Instant communication is its essence. Elegance is its character. This stylish radio is ideal for those working in supermarket, franchise store, and more large-, medium-scale or multi-storey workplaces.



Antenna  
(replaceable)



On-Off Key



Side PTT Key



Volume Key



Speaker



Channel Knob



Front PTT Key



Microphone



LED Indicator



Strap Hole



Belt Clip



Audio Jack (3.5 mm)



Battery







### Airy-light design.

135 g in weight. All for one-hand operation on the go.



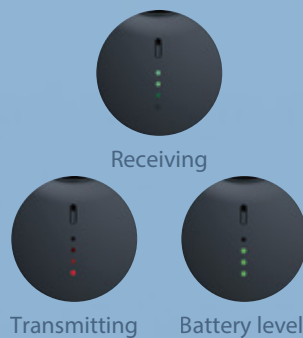
### Beauty in simplicity.

Free from superfluous details, resulting in a sleek, modern form. Smooth surface and fluid curves, making its affinity unsurpassed.



### Light for U.

Four LEDs tell you the radio status in their own way.



### Let color fit your style.

Experience the captivating elegance of S1/S1 LF.



Pearl white



Metallic grey



### Dual PTT. Dual standby. Dual efficiency.

Talk with either of two standby groups—not just one as before.



### PTT, unlike any other.

Another PTT in the front—enlarged size, circle shape, and phonograph-record-like texture. Push to talk more easily while experiencing the spellbinding beauty.







## Stay connected in the workplace.

**3-5km** in urban area      **3-5** floors

>10,000 square meters of indoor space.

\*The communications distance is subject to the actual environments.



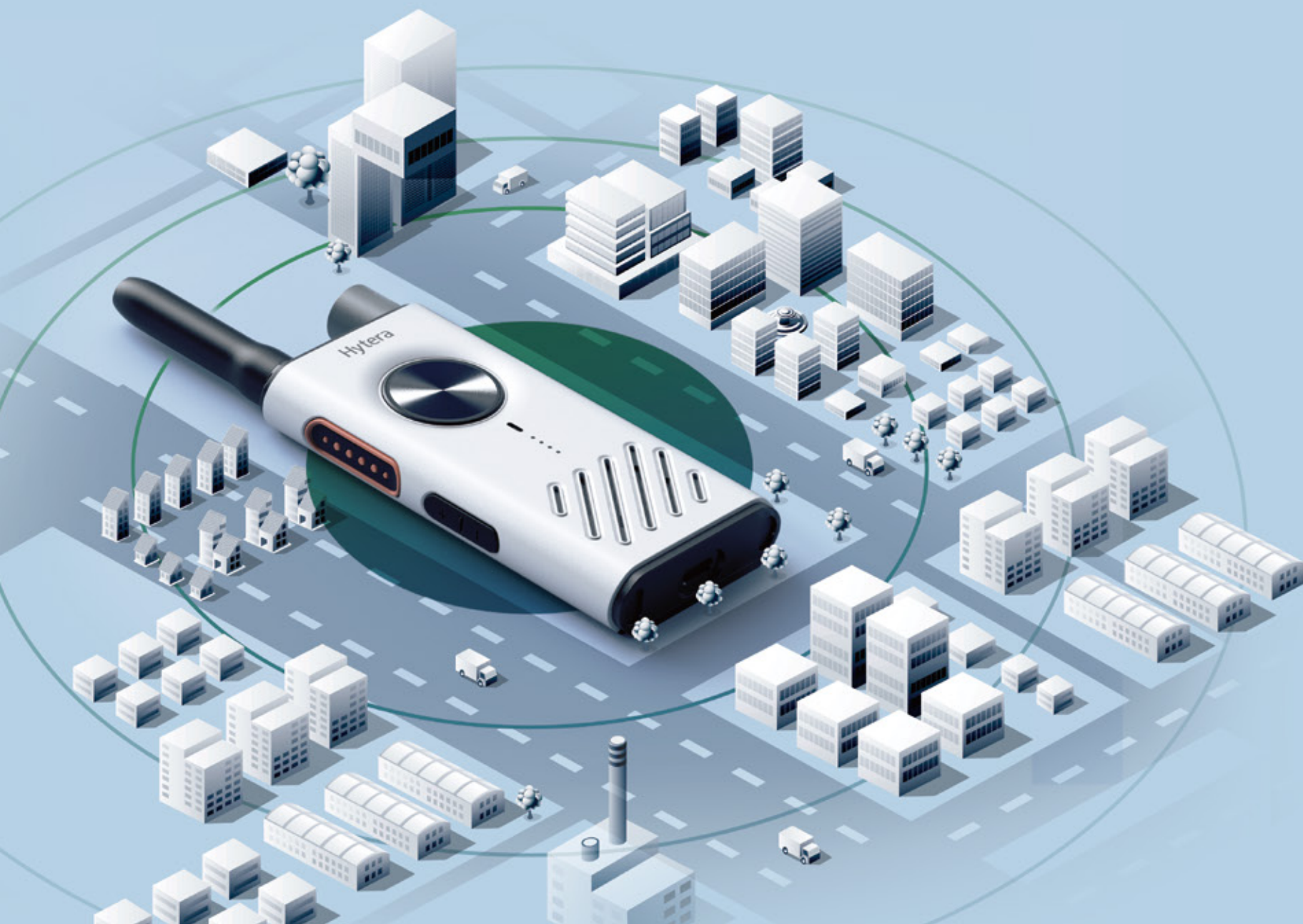
## Crystal and loud.

Crystal-clear and train-loud audios—making you get all information easily.



## Hear it, get it.

Always give you voice notifications about channel number, battery level, configuration data, and more. Get key information without any glance.



## Hands-free call.

Hytera earpiece connected. VOX (Voice Operated eXchange) on. Then, you can make a hands-free call without pressing and holding the PTT key.





## New meets old in harmony.

Channel copy, easy and quick. Quickly communicate with your existing radios, regardless of brands and models.



## Hytera Radio app, high-efficient.

Manage your radio with a phone, at your fingertips. Perform programming, batch configuration, frequency information backup, and then some.



Download APP Now



## AirClone, simple and fast.

You can clone configuration data from one S1 to many. All done in a flash.



## Outlast your shift.

**360 hrs**  
standby time

**15 hrs**  
working time  
(5/5/90 duty cycle)

With a battery life of up to 15 hours, your focus remains on the job, not the clock.

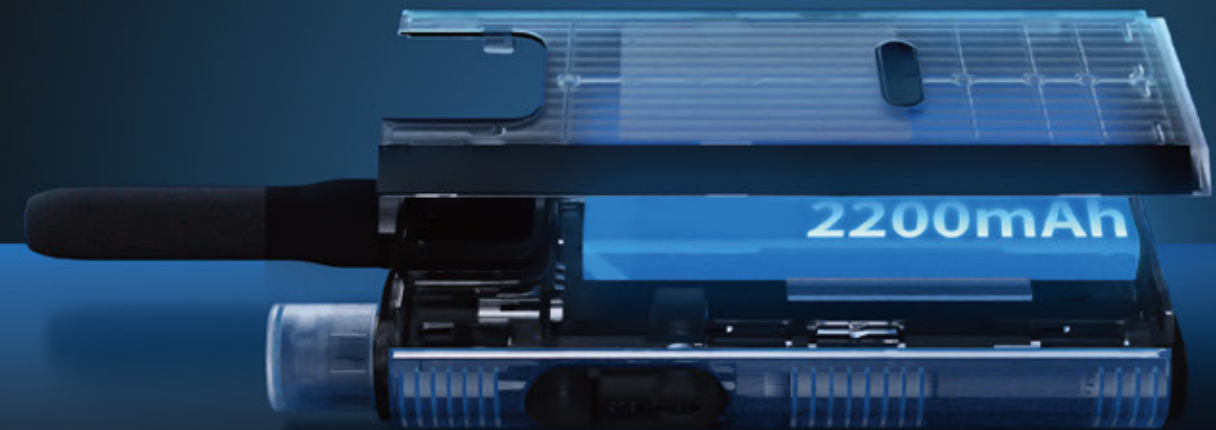


## Fast charging to refuel quickly.

USB Type-C fast charging leave you worry-free and unconstrained. 8-pocket charger, charge your batteries alone or attached on the radios in batches, easily and quickly. say goodbye to cable chaos.



Replaceable battery  
Swap a spare battery for extra-long shifts.



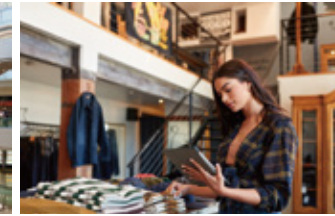




## Application Scenarios



Mall



Store



Warehouse



Supermarket

## Specifications

General	
Model	HYT-S31/HYT-S31 LF
Frequency Range	400-470 MHz (Main Unit) /446 MHz
Channel Capacity	48
Zone Capacity	3
Channel Capacity per Zone	16
Channel Spacing	12.5 kHz/20 kHz/25 kHz
Operating Voltage	3.8 V (Rated)
Battery	2200mAh Li-Polymer
Battery Life (5/5/90 Duty Cycle, TX Power)*	15 hrs (3W) / 22 hrs (1W) / 27 hrs (0.5W)
Frequency Stability	±2ppm
Antenna Impedance	50Ω
Dimensions (HxWxD)	108*53*20mm (Without antenna)
Weight (With battery and antenna)	145 g (With belt clip) 135 g (Without belt clip)
Display	/

Receiver	
Sensitivity	0.14μV
Adjacent Channel Selectivity	ETSI: 60dB@12.5kHz / 70dB@20/25kHz
Intermodulation	ETSI: 65dB@12.5/20/25kHz
Spurious Response Rejection	ETSI: 70dB@12.5/20/25kHz
Blocking	ETSI: 84dB
Hum&Noise	40dB@12.5kHz; 43dB@20kHz; 45dB@25kHz
Rated Audio Power Output	0.5W
Rated Audio Distortion	≤5%
Audio Response	+1 to -3dB
Conducted Spurious Emission	<-57dBm

Transmitter	
Power Output	400-470 MHz: 1W / 3W (low/high) 446 MHz: 0.5W
FM Modulation	11K0F3E@12.5kHz 14K0F3E@20kHz 16K0F3E@25kHz
Conducted/Radiated Emission	-36dBm<1GHz; -30dBm>1GHz
Modulation Limiting	±2.5kHz@12.5kHz; ±4.0kHz@20kHz; ±5.0kHz@25kHz
FM Hum&Noise	40dB@12.5kHz; 43dB@20kHz; 45dB@25kHz
Adjacent Channel Power	60dB@12.5kHz; 70dB@20/25kHz
Audio Response	+1 to -3dB
Audio Distortion	≤3%

\* Data comes from Hytera labs. Actual battery life will vary.

Environment	
Operating Temperature	-10°C~ +55°C
Storage Temperature	-30°C ~ +70°C
ESD	±8kV (Contact) ±15kV (Air)

## Accessories

● Standard ● Optional

